

Fast-Drop™

FIBER OPTIC RADIUS CONTROL MODULE

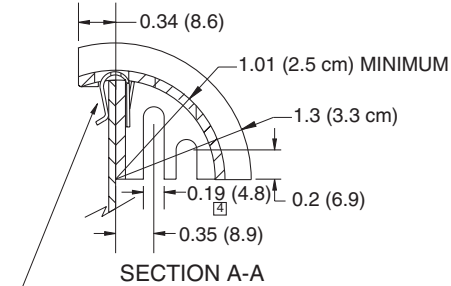
PART NOS & SIZES

Part #	Color	Width	
		Inches	cm
321-1A	Black	1.00	2.5
321-1B	Beige		
321-2A	Black	1.75	4.4
321-2B	Beige		
321-3A	Black	3.00*	7.6*
321-3B	Beige		

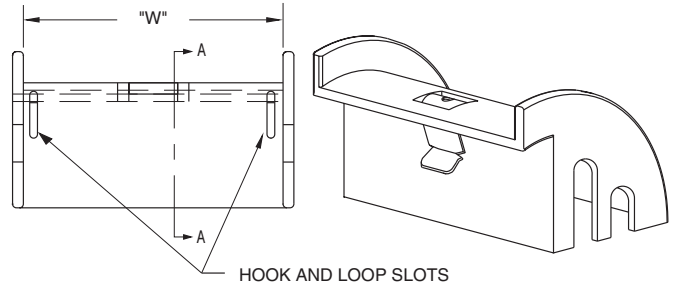
*3" RCM has no screw mounting slots.
For Hook and Loop straps add -HL to part number suffix (ie. 321-1A-*HL*).

SPECIFICATIONS

Material: Polycarbonate
Flammability: UL94 V-0
Color: Black or Beige
Typical wall thickness: .090" (2.3mm)



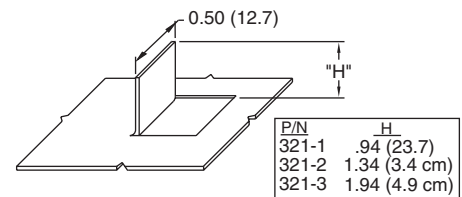
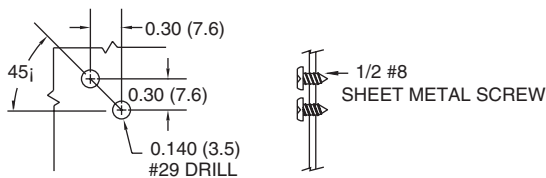
PLATED STEEL CLIP RETAINS RCM SECURELY ON UP TO 0.104 (2.7) SHEET THICKNESS



MOUNTING OPTIONS

Screw mounting instructions for contractors:

1. Drill 9/64 (#29 Drill) Diameter hole in long location slot.
2. Mount RCM using #8 sheet metal screw.
3. Use short slot to spot drill for second screw.
4. P/N 321-3 without screw slots.



TAB FOR RCM MOUNTING