

# UTILITY KNIVES

## Retractable Blades



**KLEIN  
TOOLS®**

# Retractable Utility Knives

# KLEIN TOOLS

For Professionals... Since 1857®

## No Tools Required to Change the Blade

Introducing the newest addition to the Klein utility knife family, the Klein-Kurve® heavy-duty utility knife (Cat. No. 44107). Product features include a curved handle, 10-blade storage compartment inside the handle, and a plastic holster. Klein also offers two other utility knives (Cat. Nos. 44100 & 44105). These knives both offer retractable blades and the 44105 also offers a quick change blade.

## Features

# KLEIN-KURVE®



Retractable blade locks in three positions.

Fits standard utility blades.

Stores up to 10 blades.

No tools required to change blade.

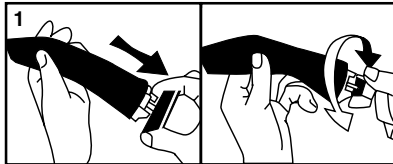
Curved handle design for comfort and ease of use.



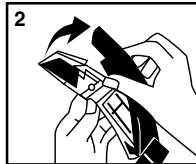
Plastic holster with belt clip for convenient use.

Cat. No. 44107

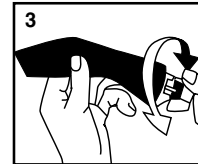
## CHANGING BLADES IS QUICK AND EASY!



1 Make sure the blade is retracted before opening the knife. Pull back end of knife and rotate to release and open the two parts of the knife.



2 Open the knife to replace cutting blades and reveal the replacement blade compartment.



3 Slide knife halves back together and rotate back end of knife to original position to close and lock.

### ⚠ WARNINGS:

- Always wear approved eye protection.
- Never use on or near live electrical circuits.
- Blades are intended for cutting only, and should be handled and disposed of with care. Bending the blade can cause it to break, possibly resulting in bodily injury.

## Ordering Information

Cat. No.	UPC No. 0-92644+	Description	Overall Length
<b>Knives</b>			
44100	44100-4	Utility Knife, Retractable Blade	6" (152 mm)
44105	44105-9	Utility Knife, Quick-Change, Retractable Blade	6-1/2" (165 mm)
<b>NEW!</b> 44107	44107-3	Klein-Kurve Utility Knife, Quick-Change, Retractable Blade	7" (178 mm)
<b>Accessories</b>			
5185	55068-3	Utility Knife Holder, Leather (for Cat. No. 44100 and 44105)	
5716	55181-9	Utility Knife Holder, Black Cordura Nylon® (for Cat. No. 44100 and 44105)	
44101	44101-1	Utility Knife Blades, 5-Pak	
44102	44102-8	Utility-Knife Blades Dispenser, w/100 Blades	
44104	44104-2	Utility-Knife Blades, Bulk 400-Pak	