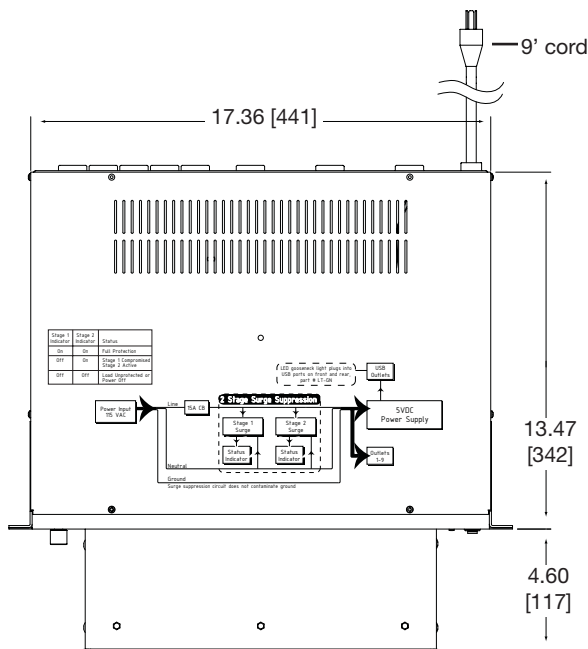


PDLT basic dimensions

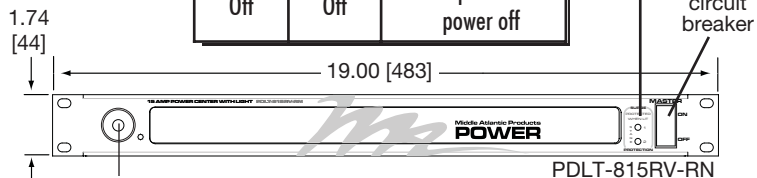
All dimensions in inches unless otherwise noted [All dimensions in brackets are in millimeters]



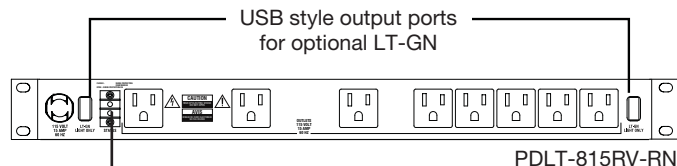
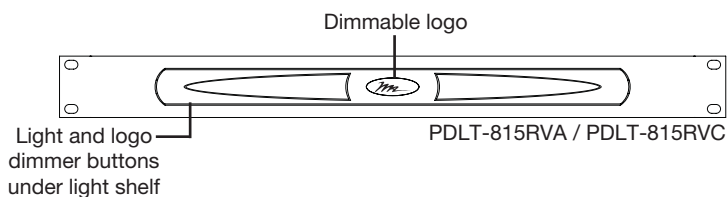
TOP VIEW
(PDLT-815RV-RN shown)

SURGE SUPPRESSION STATUS

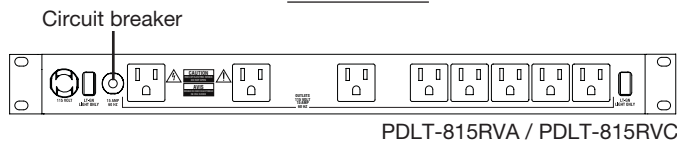
Stage 1 indicator	Stage 2 indicator	Status
On	On	Full protection
Off	On	Stage 1 compromised Stage 2 active
Off	Off	Load unprotected or power off



FRONT VIEW



REAR VIEW



Part #	Front Power Switch	Remote Notifier	Dimmable Logo	Finish
PDLT-815RV-RN	Yes	Yes	No	Flat black powder coat
PDLT-815RVA	No	No	Yes	Black brushed anodized aluminum face
PDLT-815RVC	No	No	Yes	Silver brushed anodized aluminum face

UL File # E204950

- Nominal line voltage: 120 VAC
- Maximum line current: 15 Amps
- Maximum allowable voltage: 125 VAC (RMS)
 - Maximum continuous voltage differential applied between line and neutral
- Peak impulse current (8/20 micro seconds):
 - 30,000 Amps, one time
 - 19,500 Amps, two times within 5 minutes
 - 7,000 Amps, ten times within 2 minutes
 - Maximum peak impulse current pulse as defined between line and neutral
 - Maximum multiple impulse current derated per spec

- Protection mode: Line to Neutral
- Maximum clamping voltage: 545 Volts @ 100 Amps
- Response time: Instantaneous (Less than 1 nanosecond)
- EMI/RF Suppression: More than 20 db
 - Calculated line to neutral, 100 KHz to 1 MHz suppression based upon nominal impedance
- Surge energy dissipation: 711 Joules (10 / 100 micro seconds)
- 2 Stage surge suppression with health indicators
- Surge suppression circuit does not contaminate ground

