

specifications

Cable management solutions shall be capable of managing cable on the front and rear of any standard EIA 19" rack or cabinet. Panels shall be constructed of a steel panel with plastic D-rings attached. Horizontal D-rings shall snap into panels and vertical D-rings shall be screw mounted to rack. Horizontal panels shall have pass through holes and shall be available in both front and rear versions and front only versions.



technical information

D-ring mounting options:	Horizontal D-rings snap into <i>OPEN ACCESS</i> ™ panels only; vertical D-rings screw into EIA racks
Panel mounting options:	Mount to any EIA 19" rack or cabinet
Packaging:	Cable management panels include horizontal D-rings pre-installed onto panels and #12 – 24 and M6 mounting hardware

key features and benefits

Modular, snap-in D-rings	Provides flexibility for system requirements
Flexible D-rings	Allows easy access to cables for moves, adds, and changes
Rounded D-rings	Prevents cable snags
Cable pass through holes on panels	Provides ease of installation and cable maintenance
Available in a variety of styles	Suitable for large and small cabling installations
Lightweight, sturdy construction	Easy to work with while still providing durability
Optional snap-on cover	Provides an aesthetically pleasing solution

applications

PANDUIT® *OPEN-ACCESS*™ Cable Management components offer an economical cable management solution for current and future applications. D-rings provide an "open" and efficient way to manage cable on any standard EIA 19" rack or cabinet. The panels can be used in multi-media applications with all coax, copper and fiber optic cables. The *OPEN-ACCESS*™ System offers increased

flexibility due to the modularity of the D-rings. Components can be easily added as system requirements grow, providing the lowest installed cost. The *OPEN-ACCESS*™ Cable Management System can be used with *MINI-COM*® Modular Patch Panels, *OPTICOM*® Enclosures and *NETRUNNER*™ Vertical Cable Management and Racks for a total system solution now and in the future.

OPEN-ACCESS™ Cable Management System

2 Rack Space Panel, Front and Rear

19" 3 x 3 D-rings on front and 3 x 5 D-rings on rear: CMPH2

2 Rack Space Panel, Front Only

19" 3 x 3 D-rings: CMPHF2
19" 3 x 5 D-rings: CMPHH2

1 Rack Space Panel, Front and Rear

19" 1.5 x 3 D-rings on front and 1.5 x 5 on rear: CMPH1

1 Rack Space Panel, Front Only

19" 1.5 x 3 D-rings: CMPHF1
19" 1.5 x 5 D-rings: CMPHHF1

2 Rack Space Horizontal D-Rings

3 x 3: CMDRH2

1 Rack Space Horizontal D-Rings

1.5 x 3: CMDRH1

Vertical D-Rings

2 RU: CMVDR2
1 RU: CMVDR1
Center: CMVDRC

Covers

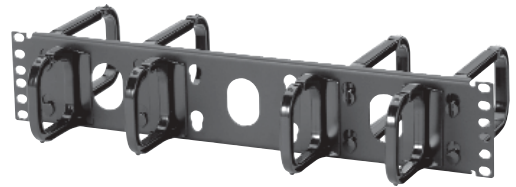
19" 2 RU: CMPH2C
19" 1 RU: CMPH1C

OPEN-ACCESS™ Cable Management System



CMPH1

H = 1.72" (42.67mm)
D = 8.57" (217.6mm)
W = 19.0" (482.6mm)



CMPH2

H = 3.47" (88.1mm)
D = 8.58" (217.8mm)
W = 19.0" (482.6mm)



CMPHF1

H = 1.72" (42.67mm)
D = 3.42" (86.87mm)
W = 19.0" (482.6mm)



CMPHF2

H = 3.47" (88.1mm)
D = 3.42" (86.87mm)
W = 19.0" (482.6mm)



CMPHHF1

H = 1.72" (42.67mm)
D = 5.38" (136.65mm)
W = 19.0" (482.6mm)



CMPHH2

H = 3.47" (88.1mm)
D = 5.38" (136.65mm)
W = 19.0" (482.6mm)



CMDRHD2

H = 3.23" (82.0mm)
D = 5.38" (136.5mm)
W = 1.50" (38.1mm)



CMVDR2

H = 3.30" (83.82mm)
D = 5.72" (145.16mm)
W = 2.38" (60.32mm)