

## E-Z-Code®

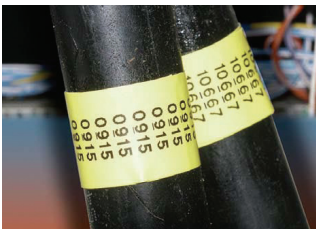
### EZL100-Kit

**NEW!**



The E-Z-Code® EZL100-Kit features the EZL-100 label printer with everything you need to make wire marking fast and simple. The EZL100-Kit features a rugged, hard-sided case, a printer, two label cassettes, a complete set of batteries, and an AC adapter. The EZL100-Kit gets you quickly started and provides handy storage for your wire marking materials. If you already own an EZL-100 printer, you may also purchase the hard-sided case or any of the accessories separately. Contact your local T&B distributor about the EZL-100 Printer, kit, case and accessories. Don't forget to ask about the complete line of time-saving products offered by Thomas & Betts.

### Easy to Use Won't Smear



Great for Rough Surface Cables



High-Visibility Print

### Simple, Accurate Wire Marking at the Touch of a Button.

- One-touch Hotkeys create labels instantly for wire wrapping, terminal blocks, device covers, patch panels, and labels in a series
- Symbols for commonly used electrical and datacom applications including ohm, ground, phone, data and fax
- Five print sizes including XS, S, M, L and XL
- Horizontal and vertical print orientation
- Memory to automatically recall last label and stores up to eight custom labels
- Large display with 2-line x 15 character views (30 characters total)

### Ordering Information

Cat. Number	Description	UPC Number
<b>EZL100-KIT</b>	EZL100-kit includes EZL-100 printer, EZ-MP34 and EZ-WN34 tapes, EZL-ADP adapter and batteries	78621095275
<b>EZL100-CASE</b>	Hard case for EZL-100 printer	78621095276
<b>EZL-100</b>	Thermal Transfer Printer	78621090086
<b>EZ-MP34</b>	Metallic Polyester 3/4" Width Tape	78621090081
<b>EZ-WN34</b>	White Nylon 3/4" Width Tape	78621090083
<b>EZL-ADP</b>	Adapter for EZL-100 Printer 9V 1.5A	78621092882

### Quality Labels That Stick and Last

- Flexible Nylon Material – excellent for wire and cable wrapping on curved, textured and highly textured surfaces
- Permanent Polyester Material – good for general labeling on flat or textured surfaces
- Prints on heavy duty 1/4", 3/8", 1/2" and 3/4" tapes
- EZ-Peel Labels in an easy-to-load cassette